



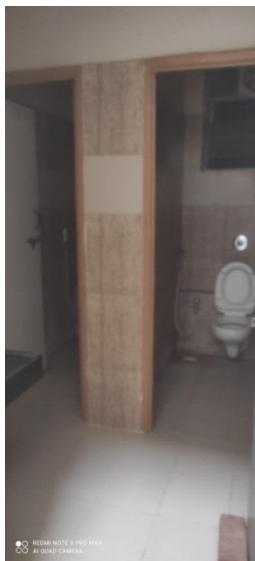
### **7.1.7 The Institution has disabled-friendly, barrier free environment:**

Maharshi Karve Stree Shikshan Sanstha's SCHOOL OF FASHION TECHNOLOGY, provides a barrier-free environment where people with disabilities can move about safely and freely and use the facilities within the premises. The environment supports the independent functioning of individuals so that they can participate without assistance in everyday activities within the campus.

## WASHROOMS

The college provides special facility for the handicapped/disabled students with a Special Toilet.

DIFFERENTLY ABLED FRIENDLY RESTROOM. There are 2 (Men's & Women's) differently abled friendly restrooms in the premises. These accessible restrooms carry the fixtures and fittings that are comfortable and convenient to the differently abled people. A nonslip floor, sliding door and grab bar provides easy access to the differently abled people.



## LIFT

Lifts facility available in the campus.

College buildings have provision of lifts for barrier free access for students, staff, visitors and differently abled people. There are two lifts.



## RAMP

At the entrance there is a special ramp is designed for the handicapped/disabled students. Ramp-Rails, an inclined plane, are built in addition to staircases at the entrance of the campus. The ramps are carefully designed as per specifications to be used by the differently abled people. Built environment with ramp/lifts for easy access to classrooms.

